

Accessories

- R/O
- RECLAIM
- Tire Chemical Sprayer
- Deluxe Door Interface
- Bay Plate Buzzer
- 8-Segment Sign
- High Volume Side Blaster
- Lighted Menu Sign
- Entrance Arch
- Driver Instructional CMD
- Bug Buster
- 3-Segment Lighted Entrance Instruction Sign
- BI-FOLD DOORS
- WATER SOFTENERS
- Frost Protection
- Undercar Wash
- Stop/Go Light
- Backlit Custom Image
- Multi-Colored FoamBrite
- Clearance Bar
- Remote Two Digit Display
- Track Extensions
- Short Bay Kit

SPECIFICATIONS

Maximum Vehicle Height	84in.
Maximum Vehicle Width (body)	95in.
Water (min)	40 psi @ 40 gpm, 1in.
Air (min)	100 psi @ 3 cfm., 3/8 in.
Electrical (basic)	208/230V AC, 60 HZ, 3 Phase, And 120V AC, 60 HZ, 1 Phase
OR	460V AC, 60 HZ, 3 Phase, And 120V AC, 60 HZ, 1 Phase

Automatic Vehicle Wash System



1500 SE 37th Street

Grimes, IA 50111

Phone: 515-986-3700

Fax: 515-986-3621

E-mail: sales@ryko.com

www.ryko.com

20335-111 100306





Designed for all sized vehicles and high throughput for maximum profitability, the SoftGloss MAXX has enjoyed great success in the car wash industry. The combination of FoamBrite wash material and technical advancements makes the SoftGloss MAXX a car wash industry icon when it comes to automatic vehicle wash systems



OFF BOARD ARCHES

NEWLY DESIGNED OFF-BOARD ARCHES PROVIDE INCREASED THROUGHPUT AND SPEED, REDUCING THE TIME A CAR IS POSITIONED UNDERNEATH THE GANTRY. THE OFF-BOARD ARCHES AESTHETIC DESIGN COMMUNICATES VALUE TO THE CUSTOMER AND PROVIDES THE ABILITY TO ADD RINSE/SEALANT OPTIONS TO THE WASH PACKAGE. ARCHES ARE AVAILABLE IN RED, BLUE OR GREY



SOFTGLOSS MAXX FEATURES

- FoamBrite Brushes
- Tall Front Arms
- Split Hub Arm Design
- Foam Bath
- Aluminum Frame
- Soft Rear Oscillation
- Dual Bay Plates
- Mirror Rinse
- Variable Wash Speed
- Top Brush Interrupt
- Electric Motors
- Large Vehicle Opening
- Amp Sensing Sensors
- Ultrasonic Mapping
- In-Bay Touch Screen Control Box

RAIN SHIELD PROTECTANT

PROVIDES A PROFIT GENERATING OPPORTUNITY THAT ENHANCES COLOR AND SHINE ON A VEHICLE. PROTECTS VEHICLE SURFACES AND GLASS AGAINST CORROSIVES AND UV RAYS. WATER REPELLANT COATING PROTECTS AGAINST OXIDATION AND IMPROVES VISIBILITY.



ROTARY WHEEL BLASTER

THE POWERFUL WHEEL BLASTER PROVIDES BETTER CLEANING AND THE OPPORTUNITY FOR AN UP-SELL FEATURE ON THE CAR WASH. THE INTEGRATED ROTATING WHEEL AND ROCKER PANEL BLASTER PROVIDES THE ULTIMATE CLEANING IMPACT DUE TO ITS 0 DEGREE TURBO NOZZLES.



BUG BUSTER

A FOAMING CHEMICAL APPLICATION APPLIED TO THE GRILL AND WINDSHIELD OF THE VEHICLE FOR AN ADJUSTABLE TIME AFTER THE VEHICLE IS POSITIONED ON THE TREADLE PLATE. ADJUSTABLE DWELL-TIME FOR SEASONAL VARIATIONS IS ALSO AVAILABLE. FLOOR MOUNTED AND DESIGNED TO BE APPLIED TO ALL TYPES OF VEHICLE FRONT GRILLES AND WINDSHIELDS, HELPING TO REMOVE THE DEBRIS ON THESE AREAS.



ON-BOARD DRY

A REVENUE-GENERATING FEATURE THAT WILL INCREASE WASH UPGRADE RATES. THE ON-BOARD DRY FEATURES TWO POWERFUL, OSCILLATING 10 HP FANS THAT PROVIDE A QUICK AND SATISFYING DRYING RESULT TO ANY VEHICLE.



IN-BAY TOUCH SCREEN CONTROL BOX

THE TOUCH SCREEN CONTROL BOX ALLOWS AN OPERATOR TO MAKE ADJUSTMENTS AND VIEW DIAGNOSTIC CODES IN THE BAY. THE CONTROL BOX LETS OPERATORS MAKE CHANGES TO WASH PACKAGES, TIMING AND SPEED FROM ON-SITE





Options & Accessories

Prewash



THE OPTIONAL PREWASH APPLIES A SURFACE RINSE TO REMOVE DIRT, AND GRIT BEFORE THE VEHICLE IS WASHED WITH FOAMBRITE, SAFELY ENHANCING THE GLOSS OF THE VEHICLE'S SURFACE

Wheel Scrub



THE HEAVY-DUTY ONBOARD WHEEL SCRUB IS A FANTASTIC OPTION FOR REMOVING MUD AND DIRT FROM RIMS AND HUB CAPS, ENHANCING THE OVERALL ATTRACTIVENESS OF THE VEHICLE

Image Package



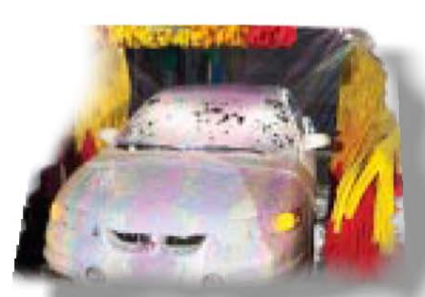
THE OPTIONAL BACKLIT, PERSONALIZED IMAGE PACKAGE GIVE YOU THE OPPORTUNITY TO DISPLAY YOUR LOGO OR CUSTOM MESSAGE FOR EVERYONE TO SEE

Audio Alert



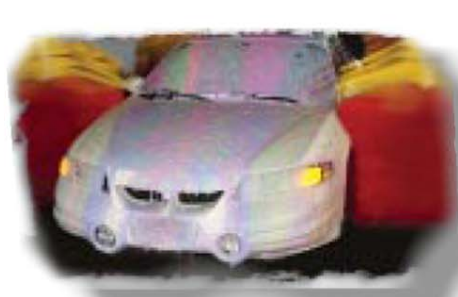
THE BAY PLATE AUDIO ALERT OPTION, WHICH SOUNDS WHEN A VEHICLE REACHES THE CORRECT STOPPING POINT IN THE WASH, WILL PROVIDE EXTRA CUSTOMER AWARENESS AND SAFETY

TriFoam Wax



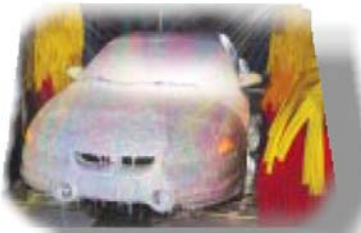
NO OTHER MACHINE IN THE INDUSTRY OFFERS SUCH A VARIED RANGE OF OPTIONS. TRIFOAM WAX IS JUST ONE OF THE PROFIT ENHANCING OPTIONS AVAILABLE TO CHOOSE FROM

TriFoam Detergent

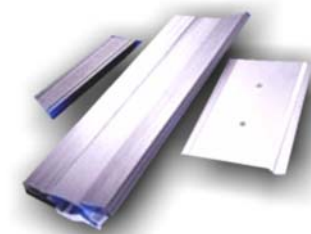


TRIFOAM DETERGENT IS A CUSTOMER FAVORITE. THE SOFTGLOSS XS'S OPTIONAL, UPGRADED TRIFOAM DELIVERY SYSTEM COATS THE VEHICLE IN RICH, TRI-COLORED FOAM

Spotlight Option



PUT EXCITEMENT INTO YOUR CAR WASH WITH THE FLASHING SPOTLIGHT OPTION. SPOTLIGHTS FLASH DURING THE TRIFOAM APPLICATION TO PROVIDE CUSTOMERS WITH A STUNNING SHOW



ALUMINUM FRAME – ALL FRAMED COMPONENTS OF THE SOFTGLOSS MAXX INCLUDING THE MACHINE FRAME ARE MADE OF DURABLE AND CORROSION RESISTANT ALUMINUM. THIS IS DONE TO ENSURE THAT EVERY MACHINE WILL WITHSTAND THE MOST RIGOROUS CAR WASH ENVIRONMENT AND LAST FOR MANY YEARS TO COME.

VARIABLE WASH SPEED – THE VARIABLE WASH SPEED OPTION ALLOWS YOU TO SPEED UP OR SLOW DOWN THE EQUIPMENT WASH SPEED DEPENDING ON THE LEVEL OF CUSTOMERS. ON BUSY DAYS YOU CAN INCREASE THE SPEED TO INCREASE THROUGHPUT. ON SLOWER DAYS, YOU CAN REDUCE THE SPEED TO PROVIDE IN-DEPTH CLEANING.



OSCILLATING WHEEL AND ROCKER PANEL BLASTER – THIS FEATURE BLASTS THE TOUGHEST DIRT, AND GRIME OFF OF WHEELS AND ROCKER PANEL AS THE VEHICLE ENTERS THE BAY.

FIXED UNDERCAR WASH – AS THE VEHICLE ENTERS THE WASH BAY THE UNDERCAR WASH FEATURE POWERFULLY CLEANS THE SALT, DIRT AND DEBRIS FROM THE UNDERSIDE OF THE VEHICLE



FIXED UNDERCAR WASH WITH FIXED WHEEL AND ROCKER PANEL BLASTER – RYKO BEGINS WITH THE FIXED UNDERCAR FEATURE AND ADDS A ROCKER PANEL BLASTER FEATURE TO PROVIDE THE ULTIMATE CLEAN TO THE WHEEL, UNDERCARRIAGE AND ROCKER PANELS.



3 SEGMENT INSTRUCTIONAL SIGN – THIS BRIGHTLY LIT SIGN PROVIDES CLEAR DRIVER INSTRUCTION ON THE EXTERIOR OF THE WASH



8 SEGMENT INSTRUCTIONAL SIGN – IN BAY INSTRUCTION SIGN



JUMBO LIGHTED SIGN – SHOW YOUR CUSTOMERS ALL YOU HAVE TO OFFER WITH A LARGE, LIGHTED JUMBO MENU DISPLAY. LARGE SIZE AND BRIGHT INTERIOR BACK LIGHTING ADDS OPTIMUM VISIBILITY TO YOUR SITE AND YOUR PRODUCT SELECTIONS





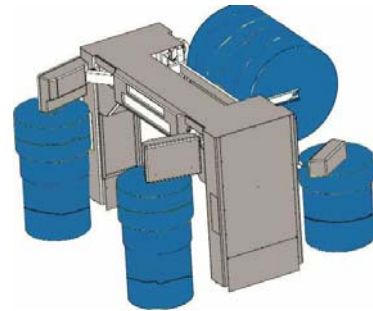
**SoftGloss
MAXX**

The SoftGloss MAXX is available in an electrifying array of standard themed color combinations to choose from. You can also customize the colors to fit your location. With 14 colors of FoamBrite wash material and an unlimited choice of colors for the body panels to choose from, you can design your machine to fit almost any color scheme imaginable

8 STANDARD COLOR COMBINATIONS TO CHOOSE FROM



RED



BLUE



GREEN



MC-1



MC-2



MC-3



MC-4



MC-5



FoamBrite

Wash Systems

Ryko's FoamBrite Wash System includes a multitude of features that allows Ryko to offer the best and safest "clean" in the industry. The FoamBrite Wash system includes 100% patented and exclusive FoamBrite wash material; a lightweight, closed-cell polymer cleaning material that is virtually waterproof and designed to prevent dirt from accumulating on the brushes. The FoamBrite wash system combines brush speed, surface pressure, wash material density and lubricity application to provide the highest quality wash. Other important components of the FoamBrite wash system include:



- **ULTRASONIC MAPPING:** Recognizes different vehicle types under the gantry, which, in turn, produces a safer, higher quality wash for any sized vehicle
- **AMP SENSING SENSORS:** This feature allows the system to recognize when a brush has been tangled in such things as a trailer hitch. The system will shut down that arm for that wash to provide a safer wash process.
- **TOP BRUSH INTERRUPT:** Used in conjunction with the Ultrasonic Mapping pass, the Top Brush Interrupt prevents the top brush from descending into pickup beds where it could come into contact with any accumulated debris and possibly damage the vehicle or machine. The ultrasonic "reads" or detects the profile of the vehicle to determine what type of vehicle is present. If a pickup is detected a timer is used to perform the Top Brush Interrupt.

FoamBrite is more than a material; it is a complete wash system that has been extensively researched and was developed to provide the safest, best cleaning and most comprehensive wash system in the car wash industry.

